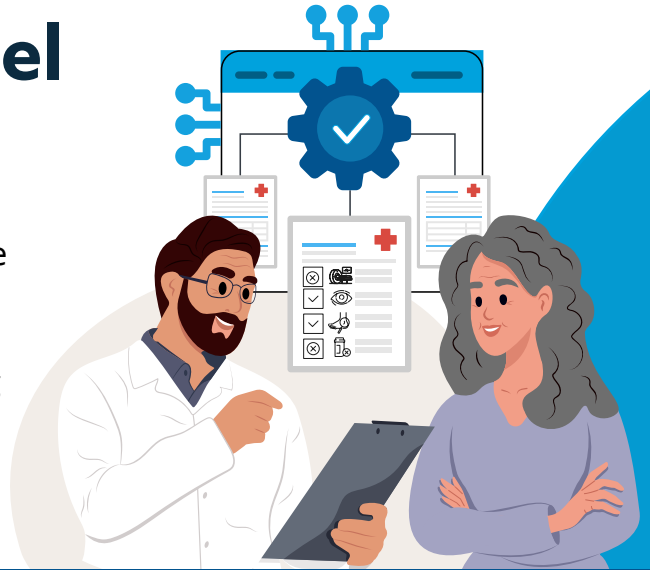


Wasteful and Inappropriate Service Reduction Model

Voluntary Model: 2026 - 2031

The Wasteful and Inappropriate Service Reduction Model (WiSeR) will harness enhanced technologies like Artificial Intelligence (AI) and Machine Learning (ML) to streamline the review process for certain services that are vulnerable to fraud, waste and abuse, helping people with Medicare receive safe and appropriate care and protecting federal taxpayers.



Model Goals

- Focus health care spending on services that will improve patient well-being
- Apply commercial payer processes that may be faster, easier, and more accurate
- Increase transparency of existing Medicare coverage policy
- De-incentivize and reduce use of medically unnecessary care



Performance Measures

Model participants will be assessed on performance across quality measures such as:



Volume of prior authorization requests processed



Timeliness of response



Clarity of explanation of request determination



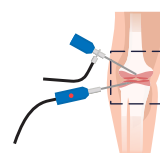
Examples of Included Services



Skin and tissue substitutes



Electrical nerve stimulators



Knee arthroscopy for knee osteoarthritis